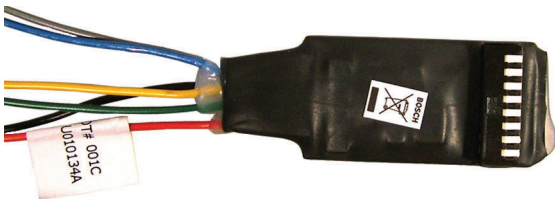


MT1-1 Single-zone Input Module

www.boschsecurity.com



BOSCH
Invented for life



- ▶ Provides flexibility in system design
- ▶ Allows device attachment to RS-485 bus
- ▶ DIP switches for setting RS-485 bus address

The MT1-1 is a single-input module that connects to the RS-485 bus of the Multi-tenant Gateway. It is suitable for installation of outdoor devices such as photoelectric beam detectors.

Installation/configuration notes

Wiring Considerations

RS-485 Bus Wiring

Use 1.0 mm (17 AWG) minimum shielded, twisted-pair wiring for the RS-485 bus connections. The RS-485 bus has a maximum length of 1200 m (3900 ft) from the MTGW to the last device. If the MT1-1 is the last device on the RS-485 bus, install a 120 Ω EOL resistor in parallel between the two RS-485 bus wires.

Device Wiring

Use wiring as specified by the device's installation instructions. Terminate the sensor loop with a 47 k Ω EOL resistor.

Parts included

Quant.	Component
1	MT1-1 Single-zone Input Module
1	47 k Ω EOL resistor
1	Literature, Installation Guide

Technical specifications

Electrical

Voltage:	8 VDC to 25 VDC
Current:	Alarm: 65 mA; Standby: 5 mA

Environmental

Environmental Protection:	For indoor or outdoor use
Relative Humidity:	90% maximum, non-condensing
Temperature (operating):	-10°C to +50°C (+14°F to +122°F)
Temperature (storage):	-10°C to +55°C (+14°F to +131°F)

Mechanical

Dimensions (body):	65 mm x 25 mm x 7 mm (2.4 in. x 0.9 in. x 0.3 in.)
Dimensions (leads):	130 mm (5.25 in.) long

Ordering information

MT1-1 Single-zone Input Module

Provides single-input connection on the RS-485 bus to and from the Multi-tenant Gateway.

Order number **MT1-1**