

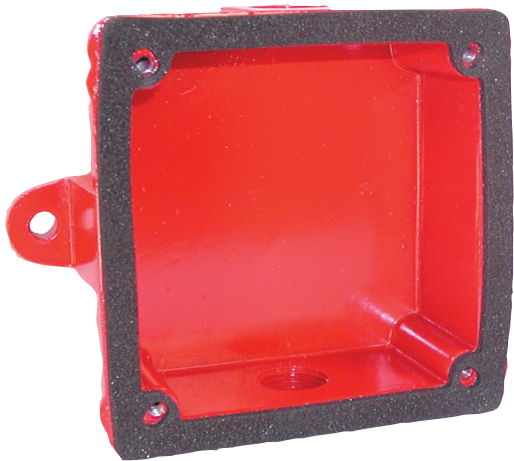
SSWBB Weatherproof Back Box

www.boschsecurity.com



BOSCH

Invented for life



Weatherproof back box for P1224MCK and S1224MCK Strobes and Horn Strobes. Measures 4.33 in. (11 cm) square by 1.55 in. (4 cm) deep.

Certifications and approvals

System Sensor holds these Listings and Approvals:

| Region | Certification |
|--------|--|
| USA | UL ULSZ: Audible-signal Appliances (ANSI/UL 464) |

Ordering information

SSWBB Weatherproof Back Box

4.33 in. (11 cm) square by 1.55 in. (4 cm) deep

Order number **SSWBB**