

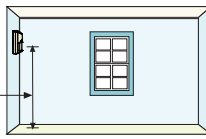
Blue Line Gen2
Pet Friendly PIR
Motion Detector
 ISC-BPR2-WP12



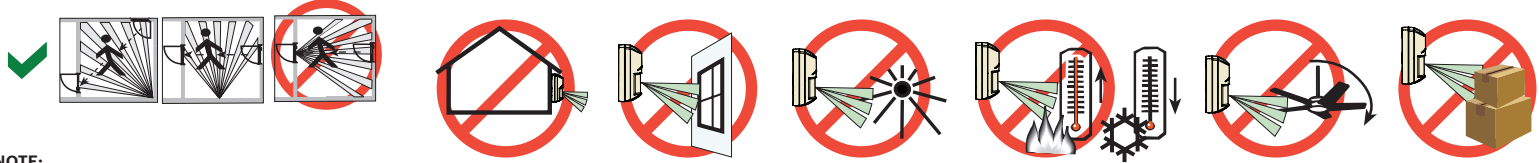
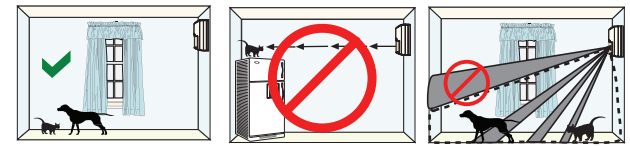
en Installation Guide

Optional Brackets:
 B328, B338, B335

2,2 m - 2,75 m
 (7.5 ft - 9 ft)
 Recommended:
 2,2m (7.5 ft)



Pet Friendly
 ≤ 20 kg (45 lb)



NOTE:

This equipment has been tested and found to comply with the limits for a Class B digital device, pursuant to Part 15 of the FCC Rules. These limits are designed to provide reasonable protection against harmful interference in a residential installation. This equipment generates, uses and can radiate radio frequency energy and, if not installed and used in accordance with the instructions, may cause harmful interference to radio communications. However, there is no guarantee that interference will not occur in a particular installation. If this equipment does cause harmful interference to radio or television reception, which can be determined by turning the equipment off and on, the user is encouraged to try to correct the interference by one or more of the following measures:

- Reorient or relocate the receiving antenna.
- Increase the separation between the equipment and receiver.
- Connect the equipment into an outlet on a circuit different from that to which the receiver is connected.

UL/C-UL

Perform Walk Test at least once a year.
 Pet immunity not tested by UL/C-UL.
 Use only a Listed limited-power source.
 The Listed control unit or a Listed burglary power supply must provide 4 hours (40 mAh) of standby power.
 Install the unit in accordance with National Electrical Code NFPA 70 and Part 1 of the Canadian Electrical code CSA C22.1.

För svensk installationsanvisning se www.boschsecurity.se.

CE EN 50131-2-2 Grade 2
 EN 50130-5 Environmental Class II
 IP30 IK04 (EN 60529, EN 62262)

Ligue todas as cablagens apenas a um circuito de segurança de tensão extra baixa (SELV).

Conecte el cableado únicamente a un circuito de seguridad para voltajes muy bajos (SELV).

INCERT B-509-0051/b

Certificat NF A2P 262020001

2 boucliers NF324 - H58
 Autosurveillance à l'ouverture
 Immunité champ magnétique
 Test sans masque de vision verticale
 et sans immunité aux animaux
www.afnor.org
www.cnpp.com



Sluit alle bedrading uitsluitend aan op een circuit met een extra lage veiligheidsvoeding. Prenez soin de connecter tous les câbles à un circuit à très basse tension de sécurité (TBTS). Collegare tutti i cavi esclusivamente a un circuito SELV (circuito di sicurezza a bassissima tensione).

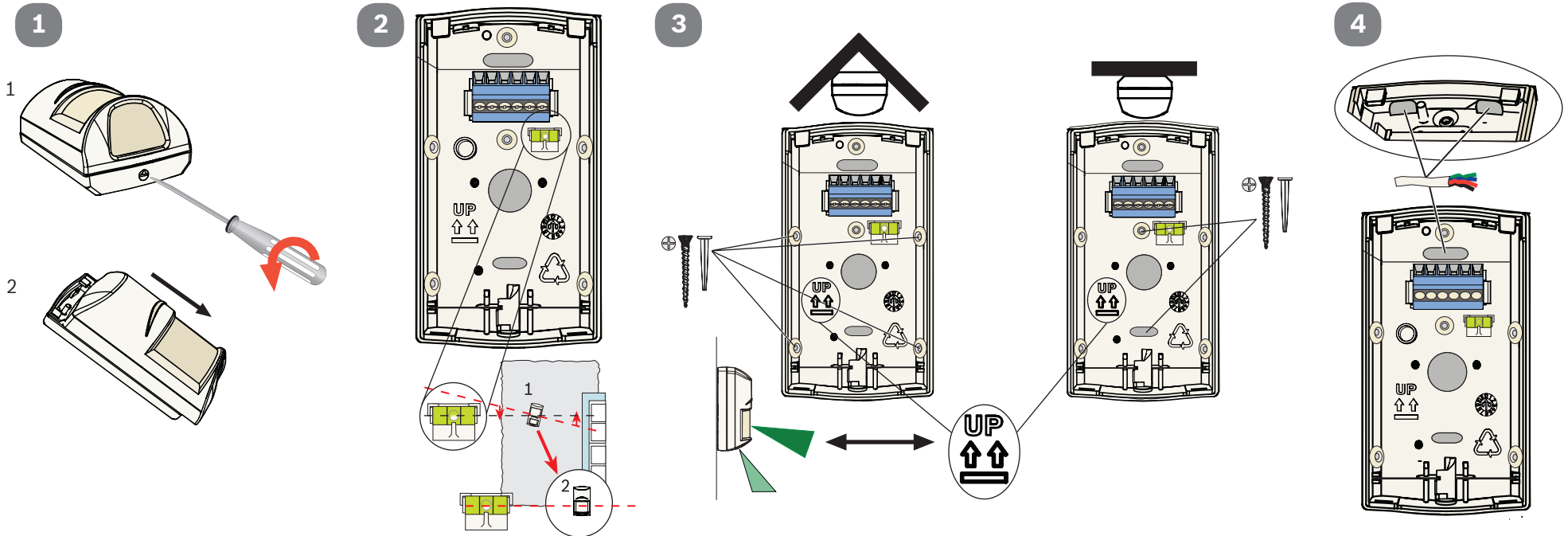
Changes or modifications not expressly approved by Bosch Security Systems, Inc. can void the user's authority to operate the equipment.

Alle Drähte sind ohne Ausnahme an Niederspannung anzuschließen.

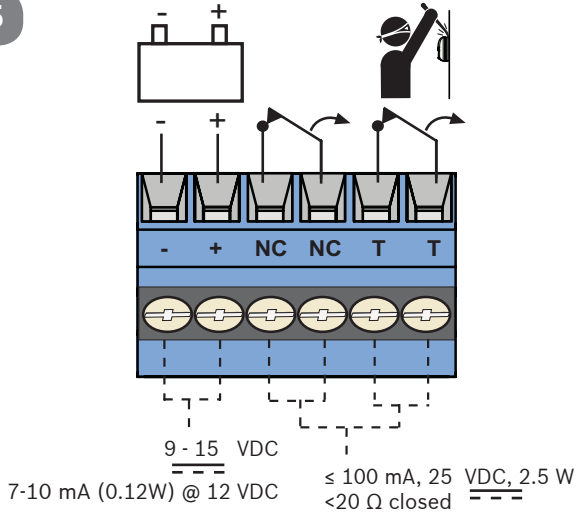
-30°C to +55°C
 (-20°F to +130°F)
 UL Listed installations, the temperature range is 0°C to +49°C
 (+32°F to +120°F)

Pour les installations certifiées NFA2P, Température de fonctionnement -10°C à +55°C

0 - 95% Relative Humidity
 (0 - 85% UL/C-UL installations)

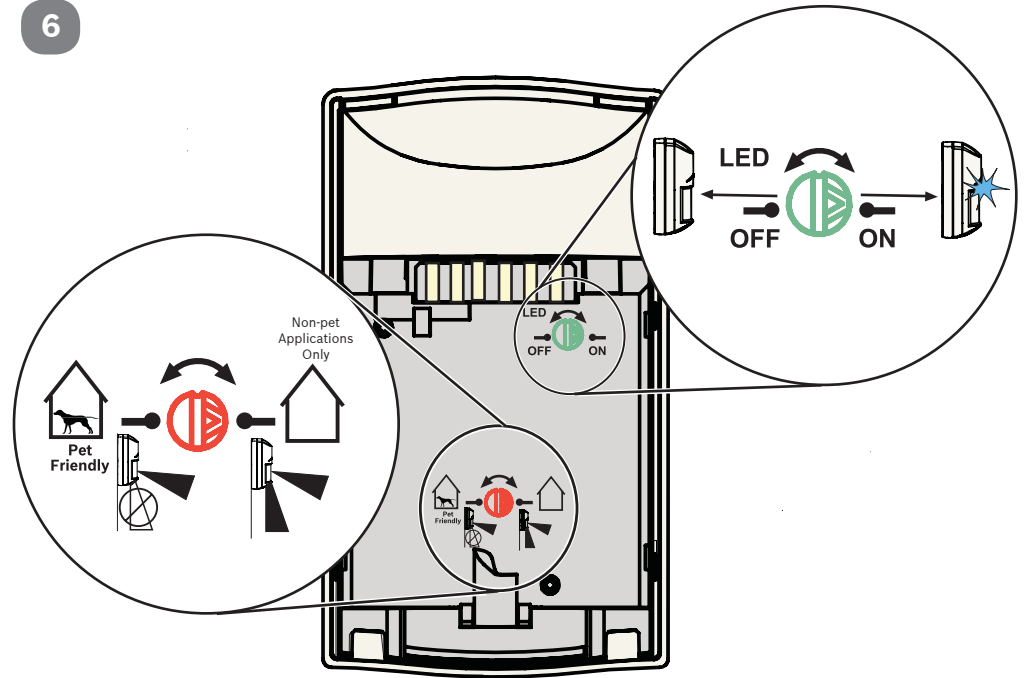


5

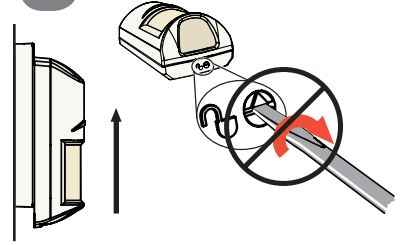


9-15 Vcc
de 7 à 10 mA @ 12 Vcc en veille et en
alarme, source limitée en puissance,
ondulation résiduelle 1 V.

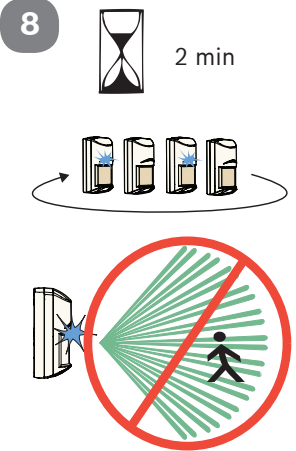
6



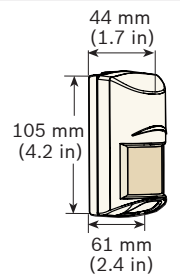
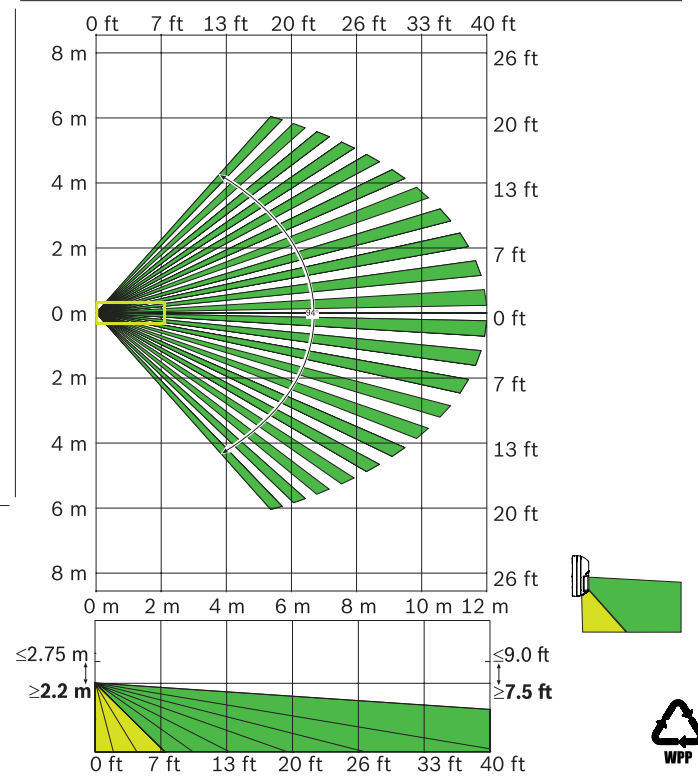
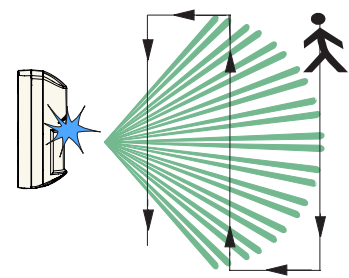
7



8



9



? → www.boschsecurity.com

Reading Bosch Security Systems B.V. Product Date Codes
For Product Date Code information, refer to the
Bosch Security Systems B.V. Web site at:
<http://www.boschsecurity.com/datecodes/>.

