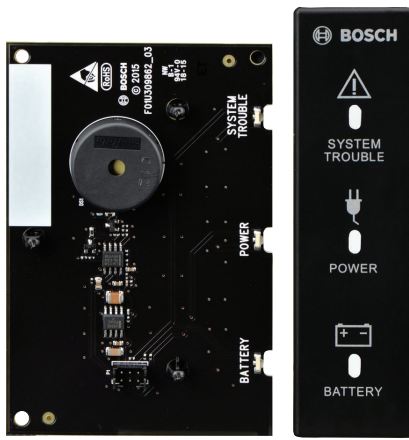


# B46 External annunciator for B465

www.boschsecurity.com



**BOSCH**  
Invented for life



- ▶ Provides LED and sounder status for supporting modules
- ▶ Easy to install
- ▶ Easy to see visibility
- ▶ Compact size

The B46 External Annunciator is an optional module that uses audio and LEDs to show System Trouble, Power, and Battery status through a knockout on select enclosure doors.

## System overview

The B46 is an optional module that provides external module LED and sounder status when installed in a supported enclosure. The module has 3 LEDs (System Trouble, Power, and Battery) which illuminate through the B46 LED cover. The LED cover snaps into a knockout in the enclosure door.

## Certifications and approvals

Region	Regulatory compliance/quality marks	
USA	UL	UL 365 - Police Station Connected Burglar Alarm Units
	UL	UL 609 - Standard for Local Burglar Alarm Units and Systems
	UL	UL 636 - Holdup Alarm Units and Systems
	UL	UL 985 - Household Fire Warning System Units (6th edition)

Region	Regulatory compliance/quality marks	
USA	UL	UL 1023 - Household Burglar Alarm System Units
	UL	UL 1076 - Proprietary Burglar Alarm Units and Systems
	UL	UL 1610 - Central Station Burglar Alarm Units
	UL	UL 1635 - Standard for Digital Alarm Communicator System Units
	CSFM	California State Fire Marshal
	FCC	Part 15 Class B
	FDNY-CoA	Fire Department of New York
USA	FDNY-CoA	6307 B465_NYC_CoA_6307
	Canada	ULC
ULC		CAN/ULC S304 - Standard for Signal Receiving Center and Premise Burglar Alarm
ULC		CAN/ULC S545 - Residential Fire Warning System Control Units

Region	Regulatory compliance/quality marks	
	ULC	ULC-ORD C1023 - Household Burglar Alarm System Units
	ULC	ULC-ORD C1076 - Proprietary Burglar Alarm Units and Systems
	IC	ICES-003 - Information Technology Equipment (ITE)

### Installation/configuration notes

#### Mounting

Mount the module into the enclosure's 3-hole mounting pattern using the supplied screws and mounting bracket. The module installs into the exterior, upper-right side of the enclosure. The mounting of the LED cover requires a rectangular knock out removed from the front of the enclosure door. Remove the knockout area and insert the LED cover into place.

#### Connecting

Use the supplied module cable to easily connect the B46 to a supporting module.

#### Compatibility

Enclosures	B10 Medium Control Panel Enclosure B10R Medium Control Panel Enclosure (Red) D8103 Universal (requires a B12 mounting plate)
Modules	B465 Conettix Universal Dual Path Communicator

### Parts included

Quantity	Component
1	B46 module
1	Hardware pack

Quantity	Component
1	Literature pack
1	Enclosure plate
1	B46 module cable

### Technical specifications

#### Properties

Dimensions	5.5 in x 4.1 in x 1.7 in (140 mm x 105 mm x 44mm)
------------	------------------------------------------------------

#### Environmental considerations

Relative humidity	5% to 93% at +32°C (+90°F)
Temperature (operating)	0°C to +49°C (+32°F to +120°F)
Mounting considerations	Mount in dry indoor locations.

#### Power requirements

Current	Standby: 23 mA Alarm: 23 mA
Voltage (operating)	12 VDC nominal

#### Wiring

Wiring	B46 module cable (included)
--------	-----------------------------

### Ordering information

#### B46 External annunciator for B465

An optional module that uses audio and LEDs to show System Trouble, Power, and Battery status through a knockout on select enclosure doors  
Order number **B46**

#### Represented by:

**Europe, Middle East, Africa:**  
Bosch Security Systems B.V.  
P.O. Box 80002  
5600 JB Eindhoven, The Netherlands  
Phone: + 31 40 2577 284  
emea.securitysystems@bosch.com  
emea.boschsecurity.com

**Germany:**  
Bosch Sicherheitssysteme GmbH  
Robert-Bosch-Ring 5  
85630 Grasbrunn  
Germany  
www.boschsecurity.com

**North America:**  
Bosch Security Systems, Inc.  
130 Perinton Parkway  
Fairport, New York, 14450, USA  
Phone: +1 800 289 0096  
Fax: +1 585 223 9180  
onlinehelp@us.bosch.com  
www.boschsecurity.us

**Asia-Pacific:**  
Robert Bosch (SEA) Pte Ltd, Security Systems  
11 Bishan Street 21  
Singapore 573943  
Phone: +65 6571 2808  
Fax: +65 6571 2699  
apr.securitysystems@bosch.com  
www.boschsecurity.asia